

## EVERYDAY APRON CORRECTION (page 220)

Our readers have discovered a mistake in this pattern. We are so sorry! It isn't a terrible mistake, but it does require further clarification. You'll need to adjust the instructions in the book according to one of the two corrections below. Also, please be aware that the apron, when made from this pattern as is, fits a size 32" waist and under. If you have any questions, please contact us at [iris@maryjanesfarm.org](mailto:iris@maryjanesfarm.org).

1. If you have already purchased your 45" wide fabric, use the following instructions:
  - A. Instead of using the cutting instructions, refer to DIAGRAM C below for placement of pattern pieces, using the NEW PATTERN from the back of this sheet.
  - B. Pin apron back pieces together at center back, right sides together, and stitch a flat fell seam.
  - C. Pin Apron Body Tails to Apron Body, right sides together, and stitch a flat fell seam.
  - D. Continue with step 1 on page 220.
2. Otherwise, purchase 60" wide cotton fabric for the apron instead of 45" wide cotton fabric as specified in the supply list. The homemade bias binding fabric, cutting diagrams and pattern will stay the same as in the book.

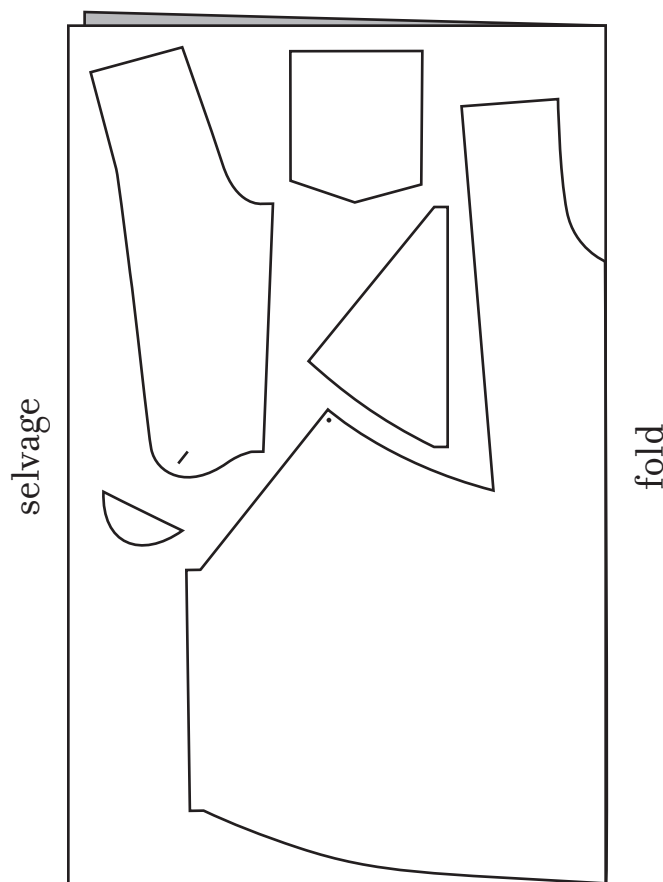


DIAGRAM C

Make a copy of this page, then enlarge it 400 percent for your life-size MaryJanesFarm pattern.

